

Airgun pellets

Corbin airgun pellet swages for high precision shooting normally consists of a LSWC-1-S die (lead semi-wadcutter) to form the major or gas-sealing diameter (B), and to form the nose, hollow base, and adjust the over-all length (and weight) of the pellet, plus a second die called the DDS-1-S (dual diameter sizer) to draw down the front of the pellet to its minor or bore-riding diameter (A). You can also use just the LSWC-1-S die for a single diameter bullet, or you can order a custom made DDS-1-SC that incorporates the bleed holes and has an adjustable internal punch to allow positioning for different weights.

The fit to your particular barrel is critical and cannot be guessed or built to “industry standards” with any reliability, because there are so many different depths of rifling and bore sizes in use today for any given “caliber” of airgun. While a rather sloppy fit of standard commercial pellet will work in most of the guns of a given caliber, the high precision bore-riding fit of a world-class swaged pellet will require a much closer tolerance. Since you have the air gun, we must rely upon you to tell us the dimensions that best fit it.



Caution:

If you give us dimensions that do not fit your chamber, so that the pellets you make in the dies do not fit, or shoot poorly, then you may need to purchase a second set of dies with the proper dimensions for that gun. This is NOT a warranty situation. Be sure to give us the dimensions that you need. We cannot guess what “works best” in any given airgun. Industry standards for the barrels vary widely. The best diameter is the one that fits your barrel. We can make no guess as to what is accurate in your gun, and what is not accurate. The designs shown win world-class competitions when the dimensions fit the gun properly.

The dimensions you give us are guaranteed to be the ones you get. We will remake the die at our expense if your written specifications are different from the lead pellet that your dies make. Again, if you tell us the wrong dimensions, and we make the die according to them, then the die cannot be returned for a “free” exchange.

Tolerances are held to our customary high quality for diameter and length at the standard die prices. Nose and base shapes are approximate and to our stock design, which is subject to minor change from time to time, unless custom punches are ordered at the custom price, which includes specific tolerance or conformity to a supplied shape specification, drawing, or sample. The nose shape can be Keith (per the illustration, a truncated conical shape), 3/4-E round nose, 1/2-E round nose, Conical, Target wadcutter (TWC), or Button-nose wadcutter (BWC).

The base shape can be specified for a custom punch (\$70 custom work fee) or you can use our standard hollow base shape with the depth specified. The depth of the hollow base is fixed by the internal LSWC-1 punch and the matching external DDS-1 punch. The major diameter (B) is fixed by the size of the LSWC-1 die. The minor diameter (A) is fixed by the DDS-1 die size. The length of the shank (G) is variable with the weight of pellet you swage. The length of skirt (H) is variable from zero to length of G with the adjustment of the DDS-1 die. The skirt width (D) is fixed by the dimensions on the internal LSWC-1 and external DDS-1 punch. The nose shape is fixed by the shape of cavity in the external LSWC-1 punch and internal DDS-1 punch, which need to match for best results. Changing nose shape means getting two new punches, the external LSWC-1 nose punch, and the internal DDS-1 nose punch. Changing diameters means getting new dies and punches entirely. Weight is of course adjustable with the LSWC-1 die, or with the adjustable punch of the DDS-1-SC die.

Please indicate the dimensions for your pellet. Any dimensions left blank will be made to our best standard practice and will be deemed acceptable as such. You are welcome to leave skirt and shoulder widths and hollow base depth at our standard dimensions, which work for most guns and weights. The only two dimensions we absolutely must have are (A) and (B) for dual diameter, or the diameter for single-diameter pellets. The reverse of this form is a chart, where you can enter those dimensions.



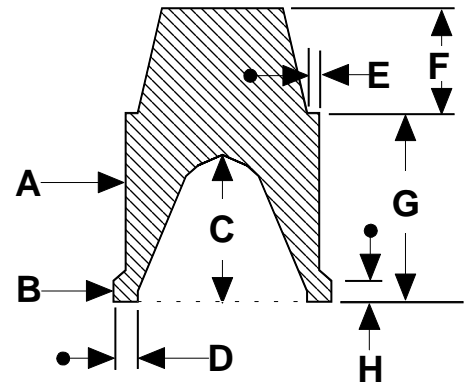
Corbin makes pellets in any size, from .123 to .900 diameter. You can get .45, 9mm, 25, or any other size you need. Just specify the diameter, not the nominal caliber name. A “25” could shoot anything from a .245 to a .260 diameter pellet, and we have no way to tell which works in your particular gun.

Name: _____ Date: _____ Cust.No. _____

Please fill in dimensions A and B, and any additional dimensions you wish to have custom made.

| | | | |
|---|-------------------|-----------------------|-----------------------|
| A | DDS-1 minor diam. | Specify: | |
| B | DDS-1 major diam. | Specify: | |
| | | <i>Custom price *</i> | <i>Standard price</i> |
| C | Depth of HB | | Aprox. 0.15-.20" |
| D | Skirt width | | Aprox. 0.020" |
| E | Shoulder width | | Aprox. 0.015" |
| F | Nose length | | Aprox. 0.75 x B |
| G | Shank length | min/max desired: | / |
| H | Skirt length | min/max desired: | / |

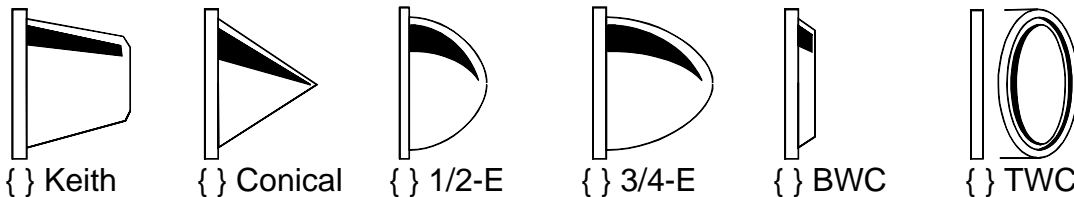
FORM for DUAL-DIAMETER PELLET DESIGN



G is adjustable by the amount of lead put into the LSWC-1 die, and the adjustment of that die for final bullet weight. H is adjustable by the setting of the DDS-1 die.

You can specify a desired minimum and maximum, or leave this blank for our standard range per caliber.

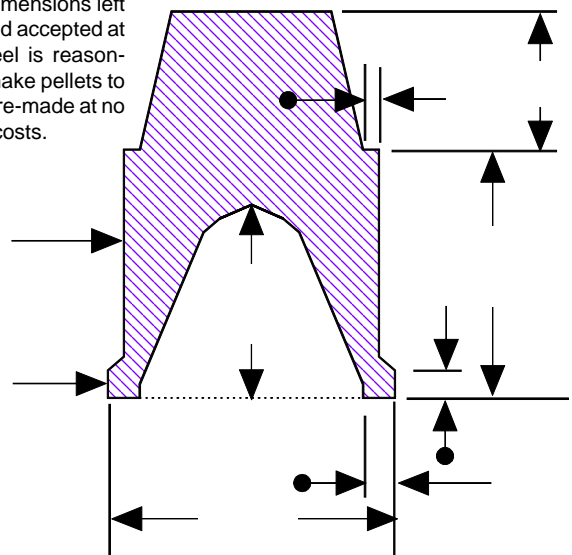
**Custom price of +\$70 applies for special nose or base shapes. Two nose or base punches are required per change, but only one \$70 custom fee applies because we are making both of the punches at the same time.*



Please indicate one of the standard nose shapes above, or sketch the custom shape you desire.

| | | | |
|--|--|--|--|
| | | | |
| | | | |
| | | | |
| | | | |
| | | | |
| | | | |
| | | | |
| | | | |

You are welcome to indicate custom dimensions on this drawing. Any dimensions left unspecified will be considered accepted at whatever our die-makers feel is reasonable. Tooling that does not make pellets to specified dimensions will be re-made at no charge other than shipping costs.



Space for custom shape drawing